

# **ASSESSMENT OF IDEAL LABOUR ROOM IN TRIPURA 2015**



**Regional Resource Centre for Northeastern States**

**(A branch of NHSRC)**

**Ministry of Health & Family Welfare,**

**Government of India**

**Guwahati, Assam - 781022**

## **TEAM MEMBERS**

### **Research Team:**

**Dr. A.C. Baishya**

**Dr. Joydeep Das**

**Dr. Hitesh Deka**

**Mr. Bhaswat Kumar Das**

**Mr. Arindam Saha**

### **Field Investigator:**

**Mr. Parthajit Chintey**

**Mr. Shashi Bhusan**

**Miss Sheri Marbaniang**

### **Data Entry:**

**Mrs. Sagarika Kalita**



## ***Acknowledgement***

At the outset, I would like to express my gratitude to the Mr. M. Nagaraju Secretary (H&FW), IAS, Govt. of Tripura and DR. Sandeep Namdeo Mahatme Mission Director, National Health Mission (NHM), Tripura for entrusting the responsibility of undertaking the '**Assessment of Labour Room in Tripura 2015**' to RRC-NES.

I would also like to thank the all Programme Officer, NHM Tripura and CMO of all eight Districts for the co-operation provided during the entire course of the assessment.

I appreciate all the assistance provided by the MOs and other staffs of the facilities who helped during the data collection for the assessment - at the DH, SDHS, CHCs and PHCs.

And of course, all the staff at RRC-NE, who have been associated directly including data collection and in some way with the study. My sincere thanks goes to them for all the hard work each one has put in, starting right from the data collection to compilation of data, their interpretation and writing the report.

**Dr A.C. Baishya**  
**Director, RRC-NE**

# INDEX

SL..	CONTENTS	Page No
<b>Chapter I</b>	INTRODUCTION	1
<b>Chapter II</b>	FINDINGS OF THE ASSESSMENT	4
2.1	Infrastructure status within the Labour Room	4
2.2	HR status:	5
2.3	Training status	6
2.4	Equipment at the labour room	6
2.5	Equipment at the NBCC room:	7
2.6	Consumables in the Labour Room	7
2.7	Drugs in the labour room	8
2.8	Record Keeping at the labour room	8
2.9	Location of NBCC	8
2.10	Delivery performance	9
	<b>Conclusion &amp; recommendations</b>	10

## TABLES

Table No.	Contents	Page No
Table 1	Table 1a: District & facility wise distribution of number of deliveries conducted in the labour room per delivery table per day (Normal delivery only)	11
Table 2a	Table 1b: District & facility wise distribution of infrastructure within the labour room	12
Table 2b	Table 1c: District & facility wise distribution of infrastructure within the labour room	13
Table 2c	Table 2a: District & facility wise distribution of availability of the protocol displayed at appropriate places and utility	14
Table 2d	Table 2b: District & facility wise distribution of availability of the protocol displayed at appropriate places and utility	15
Table 2e	Table 3a: District & facility wise HR status in the facility / hospital	16

Table 2f	Table 3b: District & facility wise regular HR status in the facility / hospital	17
Table 2g	Table 3c: District & facility wise contractual HR status in the facility / hospital	18
Table 2h	Table 3d: District & facility wise availability of type of at least one service provider at the facility / hospital	19
Table 2i	Table 4: District & facility wise training Status	20
Table 2j	Table 5.a: District & facility type of equipment available in the Labour Room	21
Table 2k	Table 5.b: District & facility type of equipment available in the Labour Room	22
Table 3	Table 5.c: District & facility type of equipment available in the Labour Room	23
Table 3a	Table 5.d: District & facility type of equipment available in the Labour Room	24
Table 3b	Table 6: District & facility type of equipment available in the NBCC	25
Table 4	Table 7a: District & facility type of equipment available in the Delivery Tray	26
Table 5a	Table 7.b: District & facility type of equipment available in the Delivery Tray	27
Table 5b	Table 8.a: District & facility Status of Drug availability and Surgical items at Labour Room and NBCC	28
Table 6a	Table 8.b: District & facility Status of Drug availability and Surgical items at Labour Room and NBCC	29
Table 6b	Table 8.c: District & facility Status of Drug availability and Surgical items at Labour Room and NBCC	30
Table 6c	Table 8.d: District & facility Status of Drug availability and Surgical items at Labour Room and NBCC	31
Table 6d	Table 8.e: District & facility Status of Drug availability and Surgical items at Labour Room and NBCC	32

Table 7a	Table 9: District & facility Status of Record keeping system in the Labour Room	33
Table 7b	Table 10.a: District & facility miscellaneous items for the labour room	34
Table 7c	Table 10.b: District & facility miscellaneous items for the labour room	35
Table 8a	Table 11: District & facility wise miscellaneous items for the NBCC	36
Table 8b	Table 12: District & facility wise location of NBCC	37
Table 9a	Table 13.a: District & facility wise no. of average deliveries at the health facility per month during last 6 month	38
Table 9b	Table 13.b: District & facility wise no. of still birth at the health facility during last 3 months	39
Table 10a	Table 13.c: District & facility wise no. of baby resuscitated under radiant warmer during last 3 months	40
Table 10b	Table 13.d: District & facility wise no. of baby started breastfeeding within one hour after delivery	41
Table 11a	Table 13.e: District & facility wise number of babies referred to NBSU or SCNU in last 3 months	42
Table 11b	Table 13.f: District & facility wise active Management of Third Stage of Labour (AMTSL) { MoV- Direct observation or by the availability and usage of inj. Oxytocin (10 i.u per patient )	43
Table 11c	Table 14.a District & facility wise administration of birth doses- BCG	44
Table 11d	Table 14.b District & facility wise administration of birth doses- OPV	45
Table 11e	Table 14.b District & facility wise administration of birth doses- OPV	46

**ANNEXURE 1 : List of surveyed facilities**

# Chapter I

## Introduction:

Improving the maternal and child health and their survival are central to the achievement of national health goals under the National Rural Health Mission (NRHM) and the 12th five year plan (2013-17). Maternal and child health outcomes are a sensitive indicator of the country's health system and also show how a society treats its most vulnerable members. Health of the mothers determines the health of the next generation and thus the adult human capital. Improved maternal, newborn and child health saves money in many ways and benefits individuals, families, communities and society.

RMNCH+A approach to improving maternal and child health describes the most essential health preventive, promotive and curative interventions and packages of services across various life stages which when delivered to scale will provide maximum gains in terms of saving lives and improving overall health status of the community.

Under 12th Five Year Plan, by 2017, India is committed to bring down the IMR to 25 per 1000 live births and MMR to 100, fertility rate to 2.1, and raise child sex ratio in age group 0-6 years to 950. This requires intensification of the efforts and making concerted focus in the weak performing districts in each of the states.

### **Delivery points**

The provision of services for delivery care in a health facility generally serves as an important indicator to assess whether the facility is optimally functional or not. The concept of 'delivery point' emerges from this presumption. Among the health facilities designated as L1, L2 and L3, there are some facilities which are conducting deliveries above a minimum benchmark (minimum two normal deliveries per month at L1; minimum six deliveries (PHC) & ten deliveries



(CHC) per month, including management of complications, at L2; minimum thirty deliveries per month including C-section at L3). These are designated as 'delivery points'. According to the government mandate, these facilities should be the first to be strengthened for providing comprehensive RMNCH services. The shortfall in trained human resource at delivery points, particularly sub centres and those in high focus districts (HFDs)/ tribal/remote areas should be addressed on priority basis. The short-term planning should focus on making delivery points functional to provide comprehensive RMNCHA services as defined for each level and to ensure adequate geographical coverage. This should be supported by a referral transport system that reaches the patient within 30 minutes of receiving a call and the health facility within the next 30 minutes. The long-term goal should be to establish and operationalise BEmOC (Basic Emergency Obstetric Care) and CEmOC (Comprehensive Emergency Obstetric Care) centres, as per the expected delivery load in the state and district.

#### **Institutional Delivery in Tripura:**

The recent DLHS 4 data shows that the institutional delivery is 72.7 pc which has increased from 46.3 pc in DLHS 3. And also the HMIS data shows that the institutional delivery is nearly 80 pc for the last three years with high district wise variation. It is well known that the people will avail the services when the quality care will be available at the facility and of course improvement / established of labour room to an ideal condition is the most necessity in this regard. Therefore to reduce the maternal and neo natal deaths, a special intervention has initiated by improving the labour room in 30 (*surveyed facility 29*) facilities from all eight districts of Tripura. The main objective of the identification of ideal labour room is as follows:

- Increase Institutional delivery at least 90 to 95%.
- Reducing Home delivery by focusing on PUSH & PULL factors.
- Reducing Inter referral / over burden of Tertiary care centre.
- To prevent maternal death.

**Rationale of the Assessment:**

To improve the coverage of institutional delivery, the prime activities would be improving the functionality of the labour room in terms of infrastructure, manpower, equipment and drugs etc. And to do that the gap analysis of the labour room is most essential. Therefore the assessment was done to highlight the identified gaps so that the implementer can take the proper initiative to fully functionality of the labour room.

**Number of labour room assessed:**

A total of 29 labour room was assessed from all 8 districts of Tripura. The surveyed 29 labour rooms are from 5 District Hospitals, 9 Sub Divisional Hospitals and 15 PHC / CHCs.

## Chapter II

### **Findings of the Assessment:**

In any assessment of the functionality of the labour room / facility, it is obvious that few gaps in terms of manpower or equipment / infrastructure will be seen. Here also few gaps were identified but it can be stated that the most of the other gaps are very minimal except specialist doctors. Another deprived area is training of the HR. Infrastructure and equipment is not only sufficient in the labour room to manage the complicated delivery in the labour room or during PNC, trained manpower is essential to manage it. Other gaps like equipment or drugs can be easily managed by developing proper information system.

The detail findings are also discussed as follows.

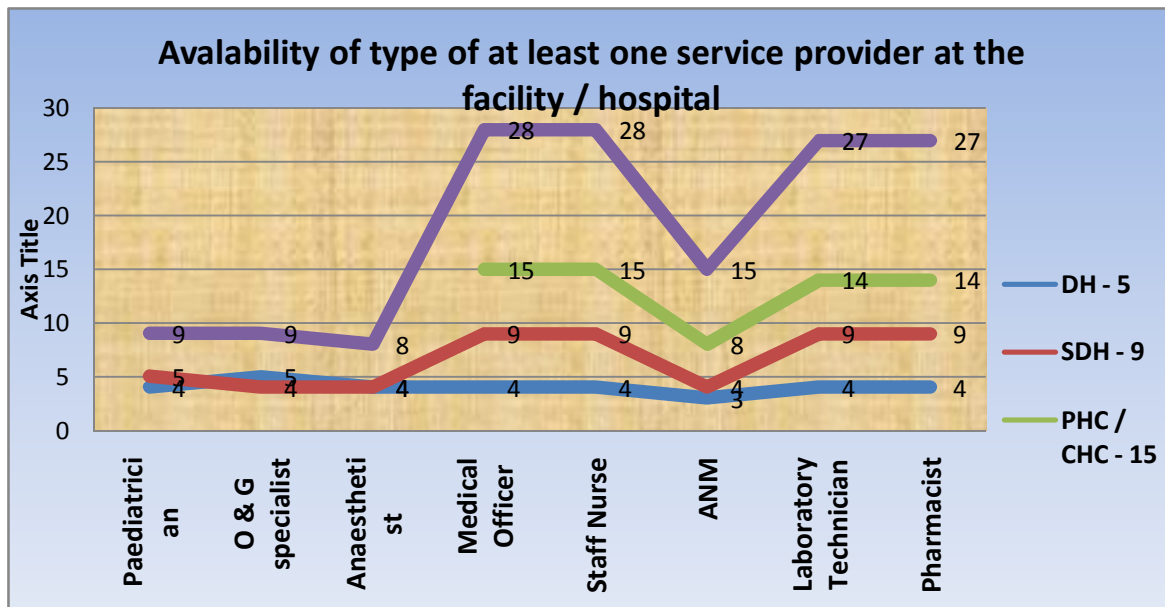
#### **2.1 Infrastructure status within the Labour Room:**

The most important belonging in the labour room is functional delivery table and from the study it can be concluded that the all labour rooms are equipped with sufficient delivery table. From the analysis it is seen that 14 facilities have conducted only one delivery per bed and the same number of facilities has conducted 2 deliveries per day per delivery table. Only one single facility has conducted three deliveries per day per table. Water leakages were observed in the 5 labour rooms out of 29 surveyed. 7 labour rooms have shortage of attached toilets. Cleanliness and 24 hr running water is also an issue for 8 the toilets. Dhalai DH has not the backup power supply in the labour room. 1 PHC / CHC has the backup power supply but do not have the regular power supply in the labour room in Unakoti district. And also backup power is not available in the labour room of 1 SDH in the same district. It was also observed that the high capacity torch with rechargeable cell was available only in 13 labour rooms. Hanging of right protocols at right places is an issue of many of the labour rooms. And also at least one protocol hanging at the appropriate place was only in 25 labour rooms i.e. Management of PPH. Few important protocols like Infection Prevention, Simplified Partograph, Breast feeding, LR sterilization, New born resuscitation, Kangaroo care were hanged very few. Protocols of management of hypothermia was almost nil except 1 SDH in Dhalai district.

## 2.2 HR status:

5 District Hospital, 9 SDH and 15 PHC / CHCs were assessed. 12 Pediatrician, 11 Gynecologist and 8 Anesthetist were placed in 14 SDH & DH. *There is scope of rationalization of the specialist based on the information available in table 3.a.* Gomti DH has all specialists but the other staffs including MOs are yet to be placed. The study was about the functionality of the labour room in terms of HR, infrastructure, equipment etc and therefore correlation between strength of HR and bed strength or delivery load is important. From the study it can be gather information about approx shortage / over the manpower. But it is little bit difficult to draw a right correlation between HR & delivery load without a composite index of manpower as different service providers are providing services differently.

None of the PHC / CHCs has any specialist. Approximately 7 MOs and 17 Staff Nurse was working per facilities out of 29 surveyed facilities. More than 2 Laboratory Technicians and Pharmacist were also working per facilities. The table 3a shows that 8 MOs, 26 SN, 5LT 2 PH were placed in per DH. So, there was slight shortage of manpower at the DH level considering the bed strength. But the same group of manpower MO, SN, LT, Ph was more in SDH and PHC/CHCs as per bed strength of IPHS. So rationalization of manpower based on evidence is quite possible in the state to ideally functioning of the facilities.



### 2.3 Training status:

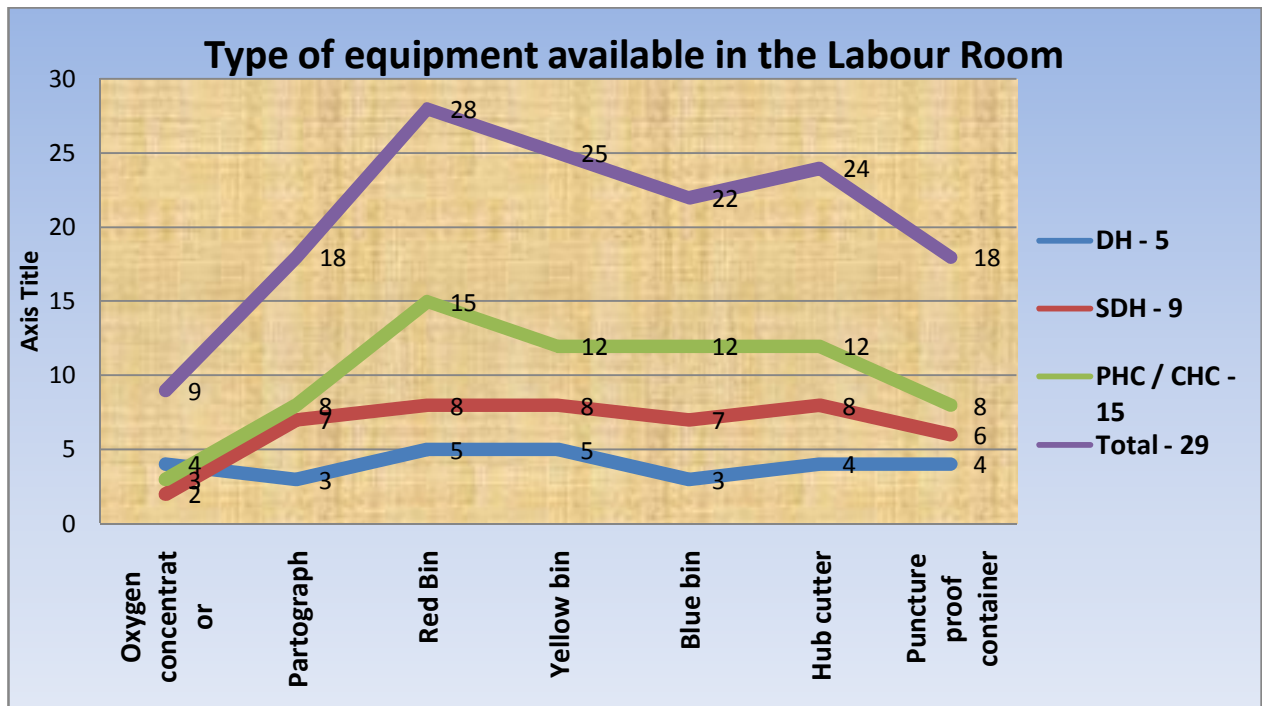
Trained manpower on BeMOC, SBA, NSSK, FMINCI / FBNC and IYCF at all level of facilities was almost missing. Only 11 MOs out of 200 were trained on BeMOC and 13 MOs on NSSK. Out of 488 SN only 23 were trained on SBA and 12 in NSSK (Table 4).

### 2.4 Equipment at the labour room:

Labour table was available in all facilities surveyed but labour table with these entire item mattresses, sheet, Macintosh, Foot-rest and Kelly’s pad was missing. Emergency drug tray and mobile lamp with stand was available in 18 & 23 facilities respectively. Other items like Suction Machine, Watch, Baby Tray, Delivery tray, Electrical sterilizer, BP apparatus and weighing machine was available in all facilities except one (Table 5).

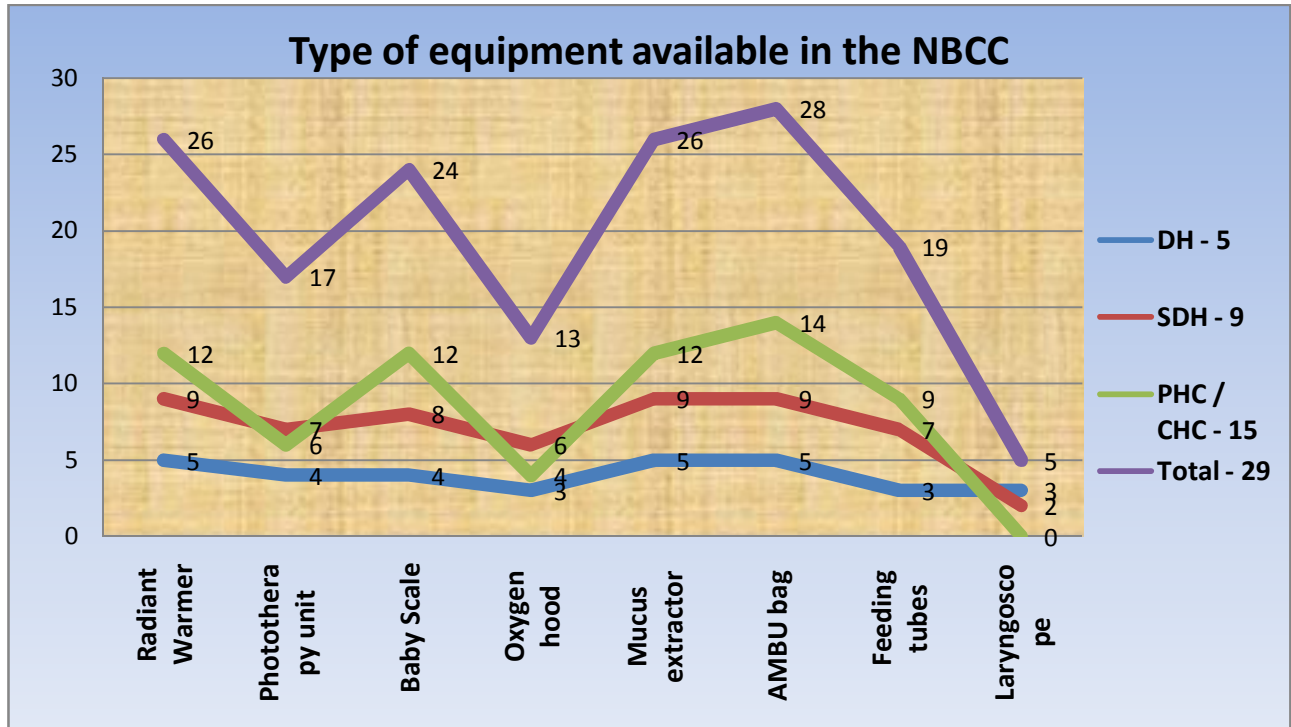
Three different coloured bin use for bio medical waste disposal in the labour room but not in all 29. Number of bin was 28 in red colour, 25 in yellow and 22 as blue colours.

Partograph, one of the important techniques to know the progress of labour but it was available in only 18 facilities.



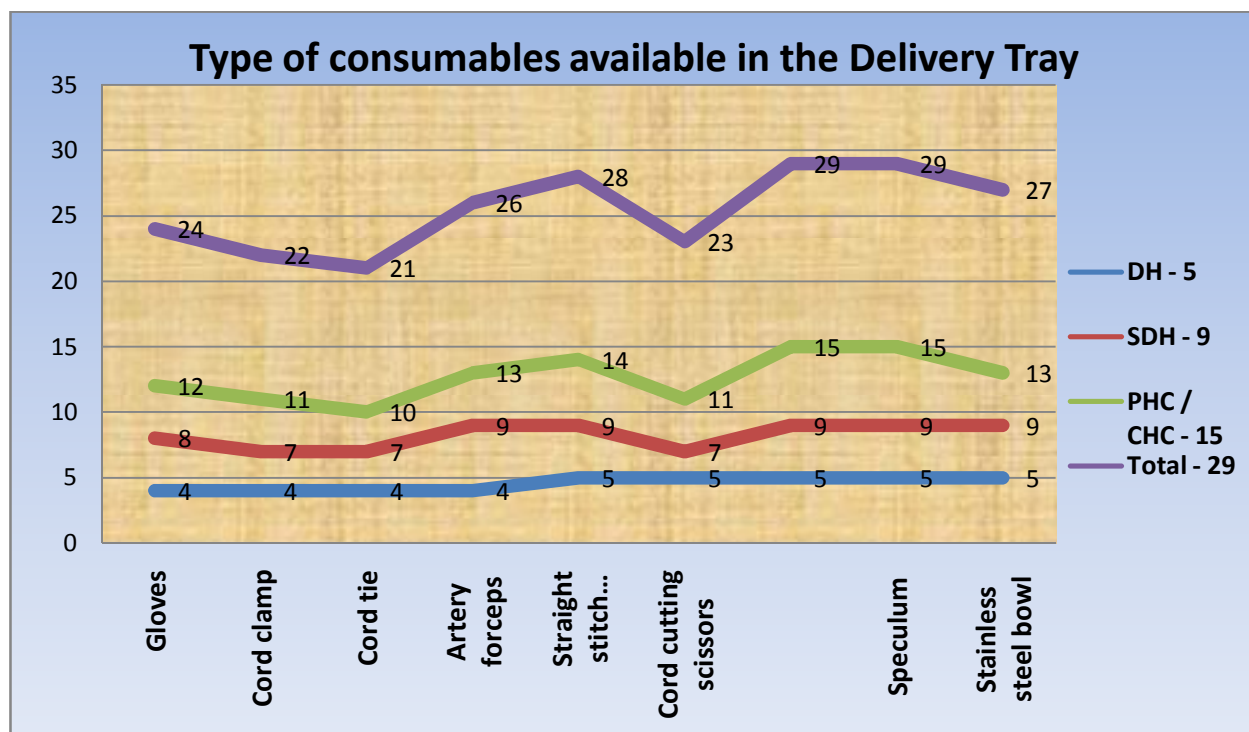
**2.5 Equipment at the NBCC room:**

Out of 29 facilities 3 PHC / CHC s do not have the radiant warmer and that is 2 in Dhalai district. Mucus extractor and AMBU bag were available in 26 & 28 facilities respectively. Total 17 phototherapy unit was available in the surveyed labour room. Only 24 baby scale was available at the NBCC.



**2.6 Consumables in the Labour Room:**

From the study it was found that there were slight shortages of Gloves (24), Cord Clamp (22) Cord tie (21), Cord cutting scissors (23), Urinary catheter (22), Sanitary pad (18) and functional Mayo's trolleys (14) out of 29 surveyed labour room ( Table 7.a & 7.b).



## **2.7 Drugs in the labour room:**

Oxytocin injection, Mizoprostol 200 mg tab, normal saline, vit K inj, Dextrose normal saline, Ringers lactate, Metronidazol inj etc were available at almost all 29 labour rooms. There were shortage of Ampicilin inj (20), Gentamicin inj (24), Oxygen (20), Adrenaline inj (10), Aminophylline inj(10) etc at the labour room. Details are available in the table 8.a to 8.e.

## **2.8 Record Keeping at the labour room:**

Delivery register were maintained and updated at 24 labor rooms but safe birth check list and NBC register were maintained only in 1 & 2 facilities respectively.

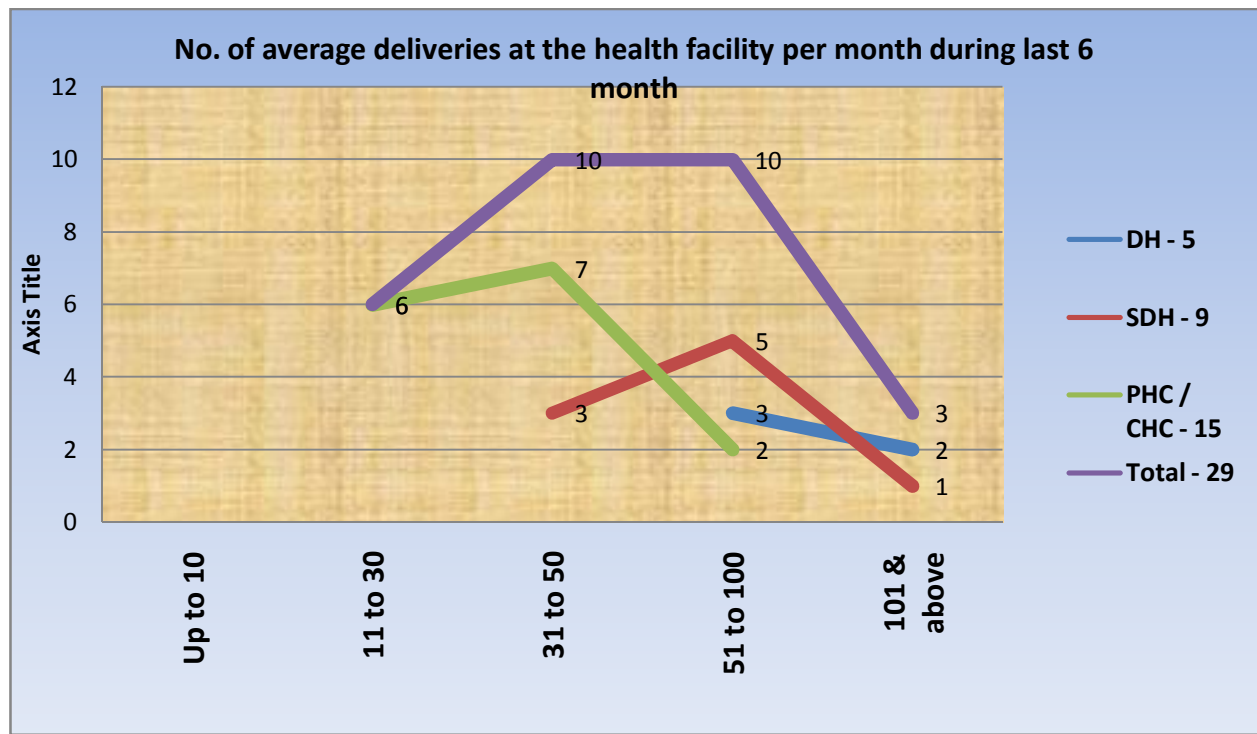
## **2.9 Location of NBCC:**

From the study it is seen that 2 PHC/CHSs do not have NBCC in Dhalai district. And in four facilities the location of NBCC was outside the labour room which is not ideal.

## 2.10 Delivery performance:

The study also tried to capture performance of delivery, baby resuscitated under radiant warmer, referred to NBSU, SNCU and doses administered for immunization of baby etc for last three months prior to the survey. These performance analyses are available from the table 13.a 14.b.

It was tried to find out the monthly average delivery for last six months and it is seen that from the table 13.a 6 facilities has conducted 11 to 30 deliveries per month. The table also reveals that the 2 DH and 1 SDH conducted more than 100 deliveries per month. It also encouraging to see that 2 PHC / CHCs and 5 SDHs also conducted 51 to 100 deliveries per month.





## **Conclusion & Recommendation:**

1. The selected facilities are conducting pleasing number of deliveries per month.
2. The selected ideal labour rooms fairly satisfy the availability of the different essential items but still there are rooms for improvements. These gaps are minimal gaps and easily can be filled up.
3. All facilities have sufficient number of delivery tables. But it needs to be equipped with mattress, sheet, Macintosh, foot rest and Kellys pad wherever needed.
4. Leakage was observed in 5 labour rooms which need to be immediately repaired.
5. 2 Labour rooms do not have the NBCC and four NBCC are outside the labour room which should be made ideally within the labour room.
6. There is scope of rationalization of manpower. More staff nurse need to be put in the DH from the PHC / CHC. The ratio of GDMO per facility is same at DH and SDH, so MO can be moved from SDH to DH.
7. Training of manpower is a foremost issue which should be looked in.
8. Shortage of gloves was observed at many facilities which need to be immediately solved.
9. Most of the protocols are not placed at right places. It needs to be placed at right place.
10. Standard uniform printed delivery register should be supplied to the labour room.

**Table 1a: District & facility wise distribution of number of deliveries conducted in the labour room per delivery table per day (Normal delivery only)**

Number of deliveries per delivery table per day						
District	Type of facility :	Up to 1	1 to 2	3 & above	Number delivery tables	Total Labour Room Surveyed
Dhalai	DH		1		1	1
	SDH		2		3	2
	PHC / CHC	1	1		3	2
Gomati	DH			1	3	1
	SDH		1		1	1
	PHC / CHC	3			5	3
Khowai	DH		1		3	1
	PHC / CHC		1		2	1
North	DH	1			3	1
	SDH		1		2	1
Sipaijhala	SDH	1	1		6	2
	PHC / CHC	2			3	2
South	DH		1		1	1
	SDH	2			4	2
	PHC / CHC	3			5	3
Unokoti	SDH		1		2	1
	PHC / CHC		2		2	2
West	PHC / CHC	1	1		3	2
Tripura	<b>DH</b>	<b>1</b>	<b>3</b>	<b>1</b>	<b>11</b>	<b>5</b>
	<b>SDH</b>	<b>3</b>	<b>6</b>		<b>18</b>	<b>9</b>
	<b>PHC / CHC</b>	<b>10</b>	<b>5</b>		<b>23</b>	<b>15</b>
<b>Total</b>		<b>14</b>	<b>14</b>	<b>1</b>	<b>52</b>	<b>29</b>

**Table 1b: District & facility wise distribution of infrastructure within the labour room**

Infrastructure status within the Labour Room									
District	Type of facilities	Water leakage/ Dampness from the room	Intact door and windows with panes	Curtains and side screen between Labour tables	Cleanliness in Labour Room (Floor, Walls, Toilet, Washbas in etc)	Washbas in inside Labour Room with Elbow tap, running water and soap	Attached Toilet with Labour Room/ Distance of Nearby Toilet	Cleanliness of toilet and running water supply	Total Labour Room Surveyed
Dhalai	DH		1	1	1	1	1	1	1
	SDH		2	2	2	1	2	2	2
	PHC/CHC		1	2	2	2	2	1	2
Gomati	DH		1	1	1	1			1
	SDH				1	1	1	1	1
	PHC/CHC	1	2	3	3	2	3	3	3
Khowai	DH		1	1	1	1		1	1
	PHC/CHC		1		1		1	1	1
North	DH		1	1	1	1	1	1	1
	SDH			1	1	1	1		1
Sipaijhal	SDH	1	2	2	2	1	1	1	2
	PHC/CHC		1	2	2	2	1	1	2
South	DH		1	1	1		1	1	1
	SDH		2	2	2	2	1	1	2
	PHC/CHC		3	3	3	3	2	2	3
Unokoti	SDH	1	1	1	1	1		1	1
	PHC/CHC	2		1	1	2	2	1	2
West	PHC/CHC		2	2	2	1	2	2	2
Tripura	DH		5	5	5	4	3	4	5
	SDH	2	7	8	9	7	6	6	9
	PHC/CHC	3	10	13	14	12	13	11	15
<b>Total</b>		<b>5</b>	<b>22</b>	<b>26</b>	<b>28</b>	<b>23</b>	<b>22</b>	<b>21</b>	<b>29</b>

**Table 1c: District & facility wise distribution of infrastructure within the labour room**

Infrastructure status within the Labour Room								
District	Type of facilities	Power Supply in Labour Room	Backup power supply (Generator or Inverter)	Functional fan, Bulb, Tube within Labour Room	Function room heater for winter	High capacity torch with rechargeable cells	Applicable protocol at appropriate places within Labour Room	Total Labour Room Surveyed
Dhalai	DH	1		1	1	1	1	1
	SDH	2	2	2	1	2	1	2
	PHC / CHC	2	2	2	1	1	1	2
Gomati	DH	1	1	1				1
	SDH	1	1	1		1		1
	PHC / CHC	3	3	3			3	3
Khowai	DH	1	1	1	1	1	1	1
	PHC / CHC	1	1	1	1	1	1	1
North	DH	1	1	1	1	1	1	1
	SDH	1	1	1		1		1
Sipaijhal	SDH	2	2	2	1	1	2	2
	PHC / CHC	2	2	2			1	2
South	DH	1	1	1				1
	SDH	2	2	2		2	1	2
	PHC / CHC	3	3	3		1		3
Unokoti	SDH	1		1			1	1
	PHC / CHC	1	2	2			2	2
West	PHC / CHC	2	2	2			1	2
Tripura	<b>DH</b>	<b>5</b>	<b>4</b>	<b>5</b>	<b>3</b>	<b>3</b>	<b>3</b>	<b>5</b>
	<b>SDH</b>	<b>9</b>	<b>8</b>	<b>9</b>	<b>2</b>	<b>7</b>	<b>5</b>	<b>9</b>
	<b>PHC / CHC</b>	<b>14</b>	<b>15</b>	<b>15</b>	<b>2</b>	<b>3</b>	<b>9</b>	<b>15</b>
<b>Total</b>		<b>28</b>	<b>27</b>	<b>29</b>	<b>7</b>	<b>13</b>	<b>17</b>	<b>29</b>

**Table 2a: District & facility wise distribution of availability of the protocol displayed at appropriate places and utility**

Availability of the protocol displayed at appropriate places and utility									
District	Type of facilities	Hand washing	Infection prevention	Simplified partograph	Vaginal bleeding before 20 weeks	Vaginal bleeding after 20 weeks	Management of PPH	Eclampsia	Total Labour Room Surveyed
Dhalai	DH	1	1	1	1	1	1	1	1
	SDH	1		1			1		2
	PHC / CHC	1	1	1	1		1	1	2
Gomati	DH	1	1	1	1		1	1	1
	SDH								1
	PHC / CHC	1	1	1	1	1	1	1	3
Khowai	DH	3	2	3	2	2	2	3	1
	PHC / CHC	1		1	1	1	1	1	1
North	DH	1		1	1	1	1	1	1
	SDH	1	1	1	1	1	1	1	1
Sipaijhal	SDH	1	1	1	1	1	1	1	2
	PHC / CHC	2	2	1	1	2	2	2	2
South	DH	1	1	1	1	1	2	2	1
	SDH			1	1	1	1	1	2
	PHC / CHC	2	1	1		1	2	2	3
Unokoti	SDH	3	3	3	2	2	3	3	1
	PHC / CHC	1			1		1		2
West	PHC / CHC	1	2	2	2	1	2	2	2
Tripura	DH	3	1	4	3	3	4	3	5
	SDH	8	6	5	5	5	8	7	9
	PHC / CHC	11	10	12	10	8	13	14	15
<b>Total</b>		<b>22</b>	<b>17</b>	<b>21</b>	<b>18</b>	<b>16</b>	<b>25</b>	<b>24</b>	<b>29</b>

**Table 2b: District & facility wise distribution of availability of the protocol displayed at appropriate places and utility**

Availability of the protocol displayed at appropriate places and utility									
District	Type of facilities	Active Management of Third Stage of Labour (AMTSL)	Breastfeeding	LR sterilization*	Management of atonic PPH *	Newborn resuscitation	Kangaroo Care	Management of Hypothermia	Total Labour Room Surveyed
Dhalai	DH	1				1			1
	SDH	1				1		1	2
	PHC / CHC	1				1			2
Gomati	DH								1
	SDH		1						1
	PHC / CHC	1		1	1	2	1		3
Khowai	DH	1	1	1	1	1	1		1
	PHC / CHC	1		1	1	1	1		1
North	DH	1	1				1		1
	SDH	1	1				1		1
Sipaijhala	SDH	1			1	2			2
	PHC / CHC	2		1	2	2	1		2
South	DH	2			1		1		1
	SDH	1	1	1	2	1	2		2
	PHC / CHC	2	1	2	3	2	3		3
Unokoti	SDH	3					1		1
	PHC / CHC	1	1						2
West	PHC / CHC	2			2	2			2
Tripura	DH	3	2	1	2	2	3		5
	SDH	8	3	1	3	4	4	1	9
	PHC / CHC	12	2	5	9	10	6		15
<b>Total</b>		<b>23</b>	<b>7</b>	<b>7</b>	<b>14</b>	<b>16</b>	<b>13</b>	<b>1</b>	<b>29</b>

**Table 3a: District & facility wise HR status in the facility / hospital**

<b>HR status in the facility / hospital</b>											
<b>District</b>	<b>Type of facilities</b>	<b>Pediatrician</b>	<b>O &amp; G</b>	<b>Anesthetist</b>	<b>MO</b>	<b>SN</b>	<b>ANM</b>	<b>LT</b>	<b>Pharmacist</b>	<b>RMNCH +A Counselor</b>	<b>Total Labour Room Surveyed</b>
Dhalai	DH	0	1	1	17	34	0	4	3	2	1
	SDH	1	1	1	18	46	2	5	7	6	2
	PHC / CHC	0	0	0	8	18	7	3	3	0	2
Gomati	DH	2	2	1	0	0	0	0	0	0	1
	SDH	0	0	0	8	20	0	3	4	3	1
	PHC / CHC	0	0	0	11	25	1	3	7	1	3
Khowai	DH	1	1	1	7	36	2	5	4	1	1
	PHC / CHC	0	0	0	5	21	0	3	2	1	1
North	DH	1	1	1	10	40	11	8	2	4	1
	SDH	1	0	0	11	14	0	2	4	2	1
Sipaijha la	SDH	1	1	1	13	49	2	5	6	1	2
	PHC / CHC	0	0	0	10	18	2	3	2	2	2
South	DH	1	1	0	8	18	1	3	3	1	1
	SDH	1	1	1	14	57	2	9	8	4	2
	PHC / CHC	0	0	0	9	26	1	3	5	0	3
Unokoti	SDH	3	2	1	19	30	1	9	4	3	1
	PHC / CHC	0	0	0	16	17	2	2	4	3	2
West	PHC / CHC	0	0	0	16	19	1	3	5	3	2
Tripura	<b>DH</b>	5	6	4	42	128	14	20	12	8	<b>5</b>
	<b>SDH</b>	7	5	4	83	216	7	33	33	19	<b>9</b>
	<b>PHC / CHC</b>	0	0	0	75	144	14	20	28	10	<b>15</b>
<b>Total</b>		12	11	8	200	488	35	73	73	37	<b>29</b>

**Table 3b: District & facility wise regular HR status in the facility / hospital**

Regular HR status in the facility / hospital											
District	Type of facilities	Pediatrician	O & G specialist	Anesthetist	MO	SN	ANM	LT	Pharmacist	RMNC H+A Counselor	Total Labour Room Surveyed
Dhalai	DH		1	1	16	34		4	3	2	1
	SDH	1	1	1	13	46	2	2	4	3	2
	PHC / CHC				7	18	7	3	3		2
Gomati	DH	2	2	1							1
	SDH				6	15		1	4	3	1
	PHC / CHC				9	25	1	3	4	1	3
Khowai	DH	1	1	1	7	36	2	5	4		1
	PHC / CHC				5	21		1	1		1
North	DH	1	1	1	10	40	11	8	2		1
	SDH	1			9	14		2	4		1
Sipaijhala	SDH	1	1	1	13	49	2	4	6	1	2
	PHC / CHC				7	18	2	2	2		2
South	DH	1	1		8	18	1	1	3		1
	SDH	1	1	1	14	57	2	6	6		2
	PHC / CHC				8	26	1		5		3
Unokoti	SDH	3	2	1	18	30	1	7	4	3	1
	PHC / CHC				12	17	2	1	4	3	2
West	PHC / CHC				10	19	1	2	3		2
Tripura	<b>DH</b>	<b>5</b>	<b>6</b>	<b>4</b>	<b>41</b>	<b>128</b>	<b>14</b>	<b>18</b>	<b>12</b>	<b>2</b>	<b>5</b>
	<b>SDH</b>	<b>7</b>	<b>5</b>	<b>4</b>	<b>73</b>	<b>211</b>	<b>7</b>	<b>22</b>	<b>28</b>	<b>10</b>	<b>9</b>
	<b>PHC / CHC</b>				<b>58</b>	<b>144</b>	<b>14</b>	<b>12</b>	<b>22</b>	<b>4</b>	<b>15</b>
<b>Total</b>		<b>12</b>	<b>11</b>	<b>8</b>	<b>172</b>	<b>483</b>	<b>35</b>	<b>52</b>	<b>62</b>	<b>16</b>	<b>29</b>



**Table 3c: District & facility wise contractual HR status in the facility / hospital**

Contractual HR status in the facility / hospital											
District	Type of facilities	Pediatrician	O & G s	Anesthetist	MO	SN	ANM	LT	Pharmacist	RMNCH +A Counselor	Total Labour Room Surveyed
Dhalai	DH	-			1						1
	SDH				5			3	3	3	2
	PHC / CHC				1						2
Gomati	DH										1
	SDH				2	5		2			1
	PHC / CHC				2				3		3
Khowai	DH									1	1
	PHC / CHC							2	1	1	1
North	DH									4	1
	SDH				2					2	1
Sipaijhala	SDH							1			2
	PHC / CHC				3			1		2	2
South	DH							2		1	1
	SDH							3	2	4	2
	PHC / CHC				1			3			3
Unokoti	SDH				1			2			1
	PHC / CHC				4			1			2
West	PHC / CHC				6			1	2	3	2
Tripura	DH				1			2		6	5
	SDH				10	5		11	5	9	9
	PHC / CHC				17			8	6	6	15
<b>Total</b>					28	5		21	11	21	29

**Table 3d: District & facility wise availability of type of at least one service provider at the facility / hospital**

Availability of type of at least one service provider at the facility / hospital											
District	Type of facilities	Pediatrician	O & G	Anesthetist	MO	SN	ANM	LT	Pharmacist	RMNCH+ A Counselor	Total Labour Room Surveyed
Dhalai	DH		1	1	1	1		1	1	1	1
	SDH	1	1	1	2	2	1	2	2	2	2
	PHC / CHC				2	2	2	2	2		2
Gomati	DH	1	1	1							1
	SDH				1	1		1	1	1	1
	PHC / CHC				3	3	1	3	3	1	3
Khowai	DH	1	1	1	1	1	1	1	1	1	1
	PHC / CHC				1	1		1	1	1	1
North	DH	1	1	1	1	1	1	1	1	1	1
	SDH	1			1	1		1	1	1	1
Sipaijhala	SDH	1	1	1	2	2	1	2	2	1	2
	PHC / CHC				2	2	2	2	2	2	2
South	DH	1	1		1	1	1	1	1	1	1
	SDH	1	1	1	2	2	1	2	2	2	2
	PHC / CHC				3	3	1	3	3		3
Unokoti	SDH	1	1	1	1	1	1	1	1	1	1
	PHC / CHC				2	2	1	1	1	1	2
West	PHC / CHC				2	2	1	2	2	2	2
Tripura	DH	4	5	4	4	4	3	4	4	4	5
	SDH	5	4	4	9	9	4	9	9	8	9
	PHC / CHC				15	15	8	14	14	7	15
<b>Total</b>		<b>9</b>	<b>9</b>	<b>8</b>	<b>28</b>	<b>28</b>	<b>15</b>	<b>27</b>	<b>27</b>	<b>19</b>	<b>29</b>

**Table 4: District & facility wise training Status**

Training Status											
		BeMOC	SBA		NSSK			FIMNCI / FBNC			Total Labour Room Surveyed
District	Type of facilities	MO	SN	ANM	MO	SN	ANM	MO	SN	ANM	
Dhalai	DH	1	1		1	1					1
	SDH	2	1		2	2					2
	PHC / CHC	1	2	1	1	1					2
Gomati	DH										1
	SDH				1			1			1
	PHC / CHC	2	3		1	2		1			3
Khowai	DH	1	1		1						1
	PHC / CHC	1	1		1	1					1
North	DH		1	1				1		1	1
	SDH		1								1
Sipaijhala	SDH		1			1					2
	PHC / CHC	1	2		1	1					2
South	DH		1		1	1			1		1
	SDH		2								2
	PHC / CHC		3		1	1					3
Unokoti	SDH			1	1						1
	PHC / CHC	2	1	1	1	1		1			2
West	PHC / CHC		2								2
Tripura	DH	2	4	1	3	2		1	1	1	5
	SDH	2	5	1	4	3		1			9
	PHC / CHC	7	14	2	6	7		2			15
<b>Total</b>		<b>11</b>	<b>23</b>	<b>4</b>	<b>13</b>	<b>12</b>		<b>4</b>	<b>1</b>	<b>1</b>	<b>29</b>

**Table 5.a: District & facility type of equipment available in the Labour Room**

Type of equipment available in the Labour Room											
District	Type of facilities	Labour table with mattress,	Sunction Machine	Mobile lamp with stand	Watch / clock with	Delivery tray	Episiotomy tray	Medicine tray	Emergency drug tray	Baby tray	Total Labour Room Surveyed
Dhalai	DH	1	1	1	1	1	1	1	1	1	1
	SDH	2	2	2	2	2	2	2	2	2	2
	PHC / CHC	2	1	1	2	2	2	2	0	2	2
Gomati	DH	1	1	0	1	1	1	1	1	1	1
	SDH	1	1	0	1	1	1	1	1	1	1
	PHC / CHC	3	3	2	3	3	3	3	1	3	3
Khowai	DH	0	1	1	1	1	1	1	1	1	1
	PHC / CHC	1	1	1	1	1	0	1	0	1	1
North	DH	1	1	1	1	1	1	1	1	1	1
	SDH	1	1	1	1	1	1	1	1	1	1
Sipaijhala	SDH	1	2	2	2	2	2	2	2	2	2
	PHC / CHC	1	2	2	2	2	1	1	1	1	2
South	DH	1	1	0	1	1	1	1	1	1	1
	SDH	2	2	2	2	2	2	2	2	2	2
	PHC / CHC	3	3	3	3	3	2	3	0	3	3
Unokoti	SDH	1	1	1	1	0	1	0	1	0	1
	PHC / CHC	2	2	1	2	2	2	2	2	2	2
West	PHC / CHC		2	2	2	2	2	2		2	2
Tripura	DH	4	5	3	5	5	5	5	5	5	5
	SDH	8	9	8	9	8	9	8	9	8	9
	PHC / CHC	12	14	12	15	15	12	14	4	14	15
<b>Total</b>		<b>24</b>	<b>28</b>	<b>23</b>	<b>29</b>	<b>28</b>	<b>26</b>	<b>27</b>	<b>18</b>	<b>27</b>	<b>29</b>

**Table 5.b: District & facility type of equipment available in the Labour Room**

Type of equipment available in the Labour Room											
District	Type of facilities	MVA tray	PPIU CD tray	Stethoscope	Foetoscope	Foetal Doppler	BP apparatus	Weighing machine for newborn	Thermometer (Digital)	Measuring Tape	Total Labour Room Surveyed
Dhalai	DH	1	1	1	1	1	1	1	1	1	1
	SDH	2	1	2	1	0	2	2	2	1	2
	PHC/CHC	1	0	2	1	1	2	2	2	1	2
Gomati	DH	1	1	1	1	0	1	1	1	0	1
	SDH	0	1	1	1	1	1	1	0	0	1
	PHC/CHC	0	1	2	2	0	3	3	3	2	3
Khowai	DH		1	1	1		1	1	1	1	1
	PHC/CHC		0	1	1		1	1	0	0	1
North	DH		0	1	1		1	1	1	1	1
	SDH		1	1	0		1	1	1	1	1
Sipaijhal a	SDH	1	1	2	2	1	2	2	1	1	2
	PHC/CHC	0	0	2	2	0	2	2	1	0	2
South	DH		0	1	1	0	1	1	0	1	1
	SDH		1	2	2	0	2	2	2	0	2
	PHC/CHC		0	2	3	1	3	3	3	1	3
Unokoti	SDH	0		1	1		1	1	1	1	1
	PHC/CHC	2		2	2		2	2	2	1	2
West	PHC/CHC				1		1	2		1	2
Tripura	DH	2	3	5	5	1	5	5	4	4	5
	SDH	3	5	9	7	2	9	9	7	4	9
	PHC/CHC	3	1	11	12	2	14	15	11	6	15
<b>Total</b>		<b>8</b>	<b>9</b>	<b>25</b>	<b>24</b>	<b>5</b>	<b>28</b>	<b>29</b>	<b>22</b>	<b>14</b>	<b>29</b>

**Table 5.c: District & facility type of equipment available in the Labour Room**

Type of equipment available in the Labour Room											
District	Type of facilities	Strech er with trolley	Whee l Chair	Focuse d lighting	stool for birth compa nion	Autocl ave drums	Electri cal sterilizer	Refrig erator	Pulse oxym eter	Oxyg en cylin der	Total Labou r Room Survey ed
Dhalai	DH	1	1	1	1	1	1	1	1	1	1
	SDH	2	1	2	1	2	2	2	2	2	2
	PHC / CHC	2	2	1	2	1	2	2	0	2	2
Gomati	DH	1	1	0	0	0	1	1	1	1	1
	SDH	1	1	1	1	1	1	0	0	1	1
	PHC / CHC	1	0	0	2	3	3	2	0	1	3
Khowai	DH	1	1	1	1	1	1	1	1	1	1
	PHC / CHC	1	0	1	1	1	1	1	0	0	1
North	DH	1	1	1	1	1	1	1	1	1	1
	SDH	1	0	1	1	1	1	1	0	1	1
Sipaijhala	SDH	0	1	2	1	1	2	1	1	2	2
	PHC / CHC	1	1	2	2	1	2	0	1	1	2
South	DH	1	1	0	0	1	1	1	0	0	1
	SDH	2	2	2	1	2	2	0	1	2	2
	PHC / CHC	3	3	3	2	3	3	2	0	0	3
Unokoti	SDH	1		1	1	1	1	0	1	1	1
	PHC / CHC	0		1	1	2	2	1	0	0	2
West	PHC / CHC	2	1	2		1	2			1	2
Tripura	DH	5	5	3	3	4	5	5	4	4	5
	SDH	7	5	9	6	8	9	4	5	9	9
	PHC / CHC	10	7	10	10	12	15	8	1	5	15
<b>Total</b>		<b>22</b>	<b>17</b>	<b>22</b>	<b>19</b>	<b>24</b>	<b>29</b>	<b>17</b>	<b>10</b>	<b>18</b>	<b>29</b>

**Table 5.d: District & facility type of equipment available in the Labour Room**

Type of equipment available in the Labour Room									
District	Type of facilities	Oxygen concentrator	Partograph	Coloured bin (RED)	Coloured bin YELLOW	Coloured bin (BLUE)	Hub cutter	Puncture proof container	Total Labour Room Surveyed
Dhalai	DH	1	1	1	1	1	1	1	1
	SDH	0	1	1	2	1	2	1	2
	PHC / CHC	1	0	2	1	1	2	0	2
Gomati	DH	1	0	1	1	1	1	1	1
	SDH	1	1	1	1	0	1	1	1
	PHC / CHC	1	2	3	2	2	2	1	3
Khowai	DH	1	1	1	1		1	1	1
	PHC / CHC	0	0	1	1		1	1	1
North	DH	1	1	1	1	1	1	1	1
	SDH	0	1	1	1	1	1	1	1
Sipaijhala	SDH	0	1	2	2	2	1	2	2
	PHC / CHC	1	1	2	2	2	1	1	2
South	DH		0	1	1	0	0	0	1
	SDH		2	2	1	2	2	1	2
	PHC / CHC		3	3	3	3	3	2	3
Unokoti	SDH	1	1	1	1	1	1	0	1
	PHC / CHC	0	2	2	1	2	2	2	2
West	PHC / CHC			2	2	2	1	1	2
Tripura	DH	4	3	5	5	3	4	4	5
	SDH	2	7	8	8	7	8	6	9
	PHC / CHC	3	8	15	12	12	12	8	15
<b>Total</b>		<b>9</b>	<b>18</b>	<b>28</b>	<b>25</b>	<b>22</b>	<b>24</b>	<b>18</b>	<b>29</b>

**Table 6: District & facility type of equipment available in the NBCC**

Type of equipment available in the NBCC										
District	Type of facilities	Radiant Warmer	Phototherapy unit	Baby Scale	Oxygen hood (Neonatal)	Mucus extractor	AMBU bag	Feeding tubes	Laryngoscope and Endotracheal intubation tubes	Total Labour Room Surveyed
Dhalai	DH	1	1	1	1	1	1	1	1	1
	SDH	2	2	2	1	2	2	2	1	2
	PHC / CHC	0	0	2	1	1	2	1	0	2
Gomati	DH	1	0	1	1	1	1	0		1
	SDH	1	1	1	0	1	1	1		1
	PHC / CHC	3	2	3	1	3	3	3		3
Khowai	DH	1	1	1		1	1	1	1	1
	PHC / CHC	1	0	1		1	1	0	0	1
North	DH	1	1	0	1	1	1	1	1	1
	SDH	1	0	1	1	1	1	1	0	1
Sipaijhala	SDH	2	1	1	1	2	2	2		2
	PHC / CHC	2	0	1	1	2	2	1		2
South	DH	1	1	1	0	1	1	0		1
	SDH	2	2	2	2	2	2	1		2
	PHC / CHC	2	2	3	0	3	3	3		3
Unokoti	SDH	1	1	1	1	1	1		1	1
	PHC / CHC	2	2	2	1	2	2		0	2
West	PHC / CHC	2					1	1		2
Tripura	DH	5	4	4	3	5	5	3	3	5
	SDH	9	7	8	6	9	9	7	2	9
	PHC / CHC	12	6	12	4	12	14	9	0	15
<b>Total</b>		<b>26</b>	<b>17</b>	<b>24</b>	<b>13</b>	<b>26</b>	<b>28</b>	<b>19</b>	<b>5</b>	<b>29</b>



**Table 7a: District & facility type of equipment available in the Delivery Tray**

Type of equipment available in the Delivery Tray											
District	Type of facilities	Gloves	Cord clamp	Cord tie	Artery forceps - Curved	Straight stitch scissors,	Cord cutting scissors	Sponge holding forcep	Speculum	Stainless steel bowl	Total Labour Room Surveyed
Dhalai	DH	1	1	1	1	1	1	1	1	1	1
	SDH	1	1	2	2	2	2	2	2	2	2
	PHC / CHC	2	1	1	2	1	1	2	2	2	2
Gomati	DH	0	0	0	0	1	1	1	1	1	1
	SDH	1	0	1	1	1	0	1	1	1	1
	PHC / CHC	2	3	3	3	3	3	3	3	3	3
Khowai	DH	1	1	1	1	1	1	1	1	1	1
	PHC / CHC	1	1	1	1	1	1	1	1	0	1
North	DH	1	1	1	1	1	1	1	1	1	1
	SDH	1	1	1	1	1	0	1	1	1	1
Sipaijhala	SDH	2	2		2	2	2	2	2	2	2
	PHC / CHC	1	1		1	2	1	2	2	1	2
South	DH	1	1	1	1	1	1	1	1	1	1
	SDH	2	2	2	2	2	2	2	2	2	2
	PHC / CHC	2	2	1	2	3	2	3	3	3	3
Unokoti	SDH	1	1	1	1	1	1	1	1	1	1
	PHC / CHC	2	2	2	2	2	1	2	2	2	2
West	PHC / CHC	2	1	2	2	2	2	2	2	2	2
Tripura	DH	4	4	4	4	5	5	5	5	5	5
	SDH	8	7	7	9	9	7	9	9	9	9
	PHC / CHC	12	11	10	13	14	11	15	15	13	15
<b>Total</b>		<b>24</b>	<b>22</b>	<b>21</b>	<b>26</b>	<b>28</b>	<b>23</b>	<b>29</b>	<b>29</b>	<b>27</b>	<b>29</b>

**Table 7.b: District & facility type of equipment available in the Delivery Tray**

Type of equipment available in the Delivery Tray										
District	Type of facilities	Kidney tray	Stainless steel drum	Urinary catheter (Red Rubber)	Urinary catheter (Foley's Catheter)	Cotton swabs	Functional IV stands	Sanitary pad	Functional Mayo's trolleys	Total Labour Room Surveyed
Dhalai	DH	1	1	1	1	1	1	1	1	1
	SDH	2	2	2	2	2	2	1	1	2
	PHC / CHC	2	2	2	1	2	2	1	1	2
Gomati	DH	1	1	0	1	1	1	0	1	1
	SDH	1	1	1	1	1	1	1	1	1
	PHC / CHC	3	3	3	2	3	3	2	0	3
Khowai	DH	1	1		1	1	1	1	1	1
	PHC / CHC	1	1		1	1	1	0	0	1
North	DH	1	1	1	1	1	1	1	1	1
	SDH	1	1	1	1	1	1	1	1	1
Sipajhala	SDH	2	2	2	1	2	2	2	2	2
	PHC / CHC	1	2	1	1	1	2	0	1	2
South	DH	1	1	0	1	1	1	1	0	1
	SDH	2	2	1	2	2	2	2	1	2
	PHC / CHC	2	3	2	2	3	3	1	1	3
Unokoti	SDH	1	1	1	1	1	1	1	0	1
	PHC / CHC	2	2	2	1	2	2	1	1	2
West	PHC / CHC	2	2	2	1	2	2	1		2
Tripura	DH	5	5	2	5	5	5	4	4	5
	SDH	9	9	8	8	9	9	8	6	9
	PHC / CHC	13	15	12	9	14	15	6	4	15
<b>Total</b>		<b>27</b>	<b>29</b>	<b>22</b>	<b>22</b>	<b>28</b>	<b>29</b>	<b>18</b>	<b>14</b>	<b>29</b>

**Table 8.a: District & facility Status of Drug availability and Surgical items at Labour Room and NBCC**

Status of Drug availability and Surgical items at Labour Room and NBCC												
District	Type of facilities	Oxytocin inj.	Misoprostol 200 micrograms (tab.)	Vitamin K inj.	Normal Saline	Dextrose 5 %	Dextrose 10 %	Dextrose normal saline	Ringier's lactate	Dextran/Hemacel (Plasma expander)	Distilled water	Total Labour Room Surveyed
Dhalai	DH	1	1	1	1	1	1	1	1	1	1	1
	SDH	2	2	2	2	2	2	2	2	2	2	2
	PHC/CHC	2	2	2	2	2	2	2	2	1	2	2
Gomati	DH	1	1	1	1	1	1	1	1	1	1	1
	SDH	1	1	1	1	1	1	1	1	1	1	1
	PHC/CHC	3	3	3	3	3	3	3	3	0	2	3
Khowai	DH	1	1	1	1	1	1	1	1	1	1	1
	PHC/CHC	1	1	1	1	1	1	1	1	0	1	1
North	DH	1	1	1	1	1	1	1	1		1	1
	SDH	1	1	1	1	1	1	1	1		1	1
Sipaijhal	SDH	2	1	2	2	2	2	2	2	1	1	2
	PHC/CHC	2	2	2	2	2	2	2	2	1	2	2
South	DH	1	1	1	1	1	1	1	1	0	1	1
	SDH	2	2	2	2	2	2	2	2	1	2	2
	PHC/CHC	3	3	3	3	3	3	3	3	1	3	3
Unokoti	SDH	1	1	1	1	1	1	1	1		1	1
	PHC/CHC	2	2	1	2	2	2	2	2		2	2
West	PHC/CHC	2	2	2	2	2	1	2	2	1	2	2
Tripura	DH	5	5	5	5	5	5	5	5	3	5	5
	SDH	9	8	9	9	9	9	9	9	5	8	9
	PHC/CHC	15	15	14	15	15	14	15	15	4	14	15
<b>Total</b>		<b>29</b>	<b>28</b>	<b>28</b>	<b>29</b>	<b>29</b>	<b>28</b>	<b>29</b>	<b>29</b>	<b>12</b>	<b>27</b>	<b>29</b>

**Table 8.b: District & facility Status of Drug availability and Surgical items at Labour Room and NBCC**

<b>Status of Drug availability and Surgical items at Labour Room and NBCC</b>											
District	Type of facilities	Ampicillin inj.	Metronidazole inj.	Gentamicin inj.	Other antibiotics	Lignocaine 2% inj.	Lignocaine 2% with adrenaline (inj.)	Oxygen	Diclofenac sodium (Injection / tab.)	Paracetamol (tab)	Total Labour Room Surveyed
Dhalai	DH	1	1	1	1	1	1	1	1	1	1
	SDH	1	2	1	2	2	0	2	2	2	2
	PHC/CHC	2	2	2	2	2	0	2	2	2	2
Gomati	DH	1	1	1	0	1	0	1	1	1	1
	SDH	1	1	1	1	1	1	1	1	1	1
	PHC/CHC	2	3	2	2	3	0	1	3	3	3
Khowai	DH	1	0	1		1	0	1	1	1	1
	PHC/CHC	1	1	1		1	1	0	1	1	1
North	DH	0	1	1	1	1	1	1	1	1	1
	SDH	1	1	1	0	1	1	1	1	1	1
Sipaijhal	SDH	1	2	2		2	0	2	2	2	2
	PHC/CHC	2	2	2		2	1	2	2	2	2
South	DH	0	1	1		1	1	0	1	1	1
	SDH	0	1	1		2	1	2	2	2	2
	PHC/CHC	3	3	1		3	1	0	3	3	3
Unokoti	SDH	1	1	1	1	1		1	1	1	1
	PHC/CHC	1	2	2	1	2		0	2	2	2
West	PHC/CHC	1	2	2	2	2	1	2	2	2	2
Tripura	<b>DH</b>	3	4	5	2	5	3	4	5	5	5
	<b>SDH</b>	5	8	7	4	9	3	9	9	9	9
	<b>PHC/CHC</b>	12	15	12	7	15	4	7	15	15	15
<b>Total</b>		20	27	24	13	29	10	20	29	29	29

**Table 8.c: District & facility Status of Drug availability and Surgical items at Labour Room and NBCC**

<b>Status of Drug availability and Surgical items at Labour Room and NBCC</b>									
District	Type of facilities	Inj. Adrenaline (epinephrine)	Inj. Aminophylline	Inj. Atropine	Inj. Calcium gluconate	Inj. Dexamethasone	Inj. Diazepam	Digoxin (tab)	Total Labour Room Surveyed
Dhalai	DH	1	1	1	1	1	1	1	1
	SDH	0	0	2	0	2	2	0	2
	PHC/CHC	1	1	2	1	2	2	1	2
Gomati	DH	0		0	0	1	1	0	1
	SDH	1		1	0	1	1	1	1
	PHC/CHC	0		3	1	3	3	0	3
Khowai	DH	0		1		1	1		1
	PHC/CHC	1		1		1	1		1
North	DH	1	1	1	1	1	1	1	1
	SDH	0	0	1	0	1	1	0	1
Sipaijhala	SDH	1	0	2	1	2	2	1	2
	PHC/CHC	2	2	2	2	2	2	0	2
South	DH	0	1	1	0	1	1	1	1
	SDH	1	1	2	2	2	2	1	2
	PHC/CHC	0	2	3	0	3	3	0	3
Unokoti	SDH	1	1	1	1	1	1	1	1
	PHC/CHC	0	0	2	0	1	2	0	2
West	PHC/CHC			1		2	2		2
Tripura	DH	2	3	4	2	5	5	3	5
	SDH	4	2	9	4	9	9	4	9
	PHC/CHC	4	5	14	4	14	15	1	15
<b>Total</b>		10	10	27	10	28	29	8	29

**Table 8.d: District & facility Status of Drug availability and Surgical items at Labour Room and NBCC**

<b>Status of Drug availability and Surgical items at Labour Room and NBCC</b>										
District	Type of facilities	Inj. Frusemide	Inj. Glucose 50%	Inj. Hydrocortisone	Inj. Nitroglycerine	Inj. Promethazine	Inj. Magnesium sulphate	Inj. Phenaramine Maleate	Methyldopa (tab)	Total Labour Room Surveyed
Dhalai	DH	1		1	1	1	1	1	1	1
	SDH	2		0	0	2	1	2	1	2
	PHC / CHC	2		2	0	2	1	1	1	2
Gomati	DH	1	0	0	0	1	1	1	0	1
	SDH	1	0	0	1	1	1	1	1	1
	PHC / CHC	3	1	1	1	3	3	3	1	3
Khowai	DH	1		0		1	1	1	1	1
	PHC / CHC	1		1		1	1	1	0	1
North	DH	1		1	0	1	1	1	1	1
	SDH	1		1	1	1	1	1	1	1
Sipaijhala	SDH	2		1		2	2	2	1	2
	PHC / CHC	2		0		2	2	2	2	2
South	DH	1		0		1	0	1	0	1
	SDH	1		1		1	2	1	1	2
	PHC / CHC	3		1		3	3	3	2	3
Unokoti	SDH	1	1	1		1	1	1	1	1
	PHC / CHC	2	0	0		2	0	2	2	2
West	PHC / CHC	2			1	1	1	2	1	2
Tripura	<b>DH</b>	5	0	2	1	5	4	5	3	5
	<b>SDH</b>	8	1	4	2	8	8	8	6	9
	<b>PHC / CHC</b>	15	1	5	2	14	11	14	9	15
<b>Total</b>		28	2	11	5	27	23	27	18	29

**Table 8.e: District & facility Status of Drug availability and Surgical items at Labour Room and NBCC**

<b>Status of Drug availability and Surgical items at Labour Room and NBCC</b>											
District	Type of facilities	Adhesive tape	Gauze piece	Cotton swabs	Cotton pads	Catgut	Chlorhexidine glucose + cetrimide	Ethanol/ Spirit	Providence Iodine	Bleaching powder/ Hypochlorite Solution	Total Labour Room Surveyed
Dhalai	DH	1	1	1	1	1	1	1	1	1	1
	SDH	2	2	2	2	2	2	2	2	2	2
	PHC/CHC	2	2	2	1	2	2	2	2	2	2
Gomati	DH	1	1	1	1	1	1	1	1	1	1
	SDH	1	1	1	1	1	1	1	1	1	1
	PHC/CHC	3	3	3	3	3	3	3	3	3	3
Khowai	DH	1	1	1	1	1	1	1	1	1	1
	PHC/CHC	1	1	1	1	1	1	1	1	1	1
North	DH	1	1	1	1	1	1	1	1	1	1
	SDH	1	1	1	1	1	1	1	1	1	1
Sipaijhal	SDH	2	2	2	2	2	2	2	1	2	2
	PHC/CHC	2	2	2	2	2	2	2	2	2	2
South	DH	1	1	1	1	1	1	1	1	1	1
	SDH	1	2	2	2	2	2	2	2	2	2
	PHC/CHC	3	3	3	3	3	3	3	3	3	3
Unokoti	SDH	1	1	1	1	1	1	1	1	1	1
	PHC/CHC	2	2	2	2	2	1	2	2	2	2
West	PHC/CHC	2	2	2	1	1	1	1	1	2	2
Tripura	DH	5	5	5	5	5	5	5	5	5	5
	SDH	8	9	9	9	9	9	9	8	9	9
	PHC/CHC	15	15	15	13	14	13	14	14	15	15
<b>Total</b>		28	29	29	27	28	27	28	27	29	29

**Table 9: District & facility Status of Record keeping system in the Labour Room**

<b>Record keeping system in the Labour Room</b>					
<b>District</b>	<b>Type of facilities</b>	<b>Safe birth check list</b>	<b>Maintainance &amp; updation of Delivery Register</b>	<b>Maintainance &amp; updation of NBCC Register</b>	<b>Total Labour Room Surveyed</b>
Dhalai	DH		1		<b>1</b>
	SDH		2		<b>2</b>
	PHC / CHC		2		<b>2</b>
Gomati	DH				<b>1</b>
	SDH		1		<b>1</b>
	PHC / CHC		3		<b>3</b>
Khowai	DH		1		<b>1</b>
	PHC / CHC		1		<b>1</b>
North	DH		1	1	<b>1</b>
	SDH		1		<b>1</b>
Sipaijhala	SDH	1			<b>2</b>
	PHC / CHC			1	<b>2</b>
South	DH		1		<b>1</b>
	SDH		2		<b>2</b>
	PHC / CHC		3		<b>3</b>
Unokoti	SDH		1		<b>1</b>
	PHC / CHC		2		<b>2</b>
West	PHC / CHC		2		<b>2</b>
Tripura	<b>DH</b>		4	1	<b>5</b>
	<b>SDH</b>	1	7		<b>9</b>
	<b>PHC / CHC</b>		13	1	<b>15</b>
<b>Total</b>		1	24	2	<b>29</b>



**Table 10.a: District & facility miscellaneous items for the labour room**

Miscellaneous items for the labour room								
District	Type of facilities	Soap and detergent Powder	Plastic Apron	Disposable delivery kit	Urine albumin sugar strip	Gown	Surgical drape (Plain towel)	Total Labour Room Surveyed
Dhalai	DH	1	1	1	1	1	1	1
	SDH	2	2	2		2	2	2
	PHC / CHC	2	1	1		1	1	2
Gomati	DH	1	1	1		1	1	1
	SDH	1	1			1		1
	PHC / CHC	3	3	1		3	2	3
Khowai	DH	1	1			1	1	1
	PHC / CHC	1		1		1	1	1
North	DH							1
	SDH	1	1	1		1	1	1
Sipaijhala	SDH	2	1			2	1	2
	PHC / CHC	2	1			2	1	2
South	DH	1	1	1	1	1		1
	SDH	2	2	1		1		2
	PHC / CHC	3	2			3		3
Unokoti	SDH	1	1		1	1	1	1
	PHC / CHC	2	1	1		1	2	2
West	PHC / CHC	2	2			1	1	2
Tripura	<b>DH</b>	4	4	3	2	4	3	5
	<b>SDH</b>	9	8	4	1	8	5	9
	<b>PHC / CHC</b>	15	10	4		12	8	15
<b>Total</b>		28	22	11	3	24	16	29

**Table 10.b: District & facility miscellaneous items for the labour room**

Miscellaneous items for the labour room								
District	Type of facilities	Surgical drape (hole towel)	Sleepers	Macintosh	Gloves	Kelly's pad	Buckets for cleaning the labour room	Total Labour Room Surveyed
Dhalai	DH	1	1	1	1		1	1
	SDH	1	2	2	2	2	2	2
	PHC / CHC	1	2	2	2		2	2
Gomati	DH	1	1	1	1		1	1
	SDH		1	1	1		1	1
	PHC / CHC		3	3	3	2	3	3
Khowai	DH	1	1	1	1		1	1
	PHC / CHC	1	1		1		1	1
North	DH							1
	SDH		1		1		1	1
Sipajhala	SDH		1	2	2		2	2
	PHC / CHC	1	1	1	2		2	2
South	DH		1	1	1		1	1
	SDH		2	2	2		2	2
	PHC / CHC		3	3	3		3	3
Unokoti	SDH	1	1	1	1		1	1
	PHC / CHC		2	1	2		2	2
West	PHC / CHC		1	2	2		2	2
Tripura	DH	3	4	4	4		4	5
	SDH	2	8	8	9	2	9	9
	PHC / CHC	3	13	12	15	2	15	15
<b>Total</b>		8	25	24	28	4	28	29

**Table 11: District & facility wise miscellaneous items for the NBCC**

<b>Miscellaneous items for the NBCC</b>						
<b>District</b>	<b>Type of facilities</b>	<b>Sterile Gloves</b>	<b>Disposable Syringe &amp; Needle</b>	<b>Baby Wrapping Towel</b>	<b>Mucous Sucker</b>	<b>Total Labour Room Surveyed</b>
Dhalai	DH	1	1	1	1	<b>1</b>
	SDH	2	2	2	2	<b>2</b>
	PHC / CHC	2	2	2	1	<b>2</b>
Gomati	DH	1	1	1	1	<b>1</b>
	SDH	1	1	1	1	<b>1</b>
	PHC / CHC	3	3	3	3	<b>3</b>
Khowai	DH	1	1	1	1	<b>1</b>
	PHC / CHC	1	1	1	1	<b>1</b>
North	DH	1	1	1	1	<b>1</b>
	SDH	1	1	1	1	<b>1</b>
Sipajhala	SDH	2	2	2	2	<b>2</b>
	PHC / CHC	2	2	2	2	<b>2</b>
South	DH	1	1		1	<b>1</b>
	SDH	2	2	2	2	<b>2</b>
	PHC / CHC	3	3	3	3	<b>3</b>
Unokoti	SDH	1	1	1	1	<b>1</b>
	PHC / CHC	2	2	2	2	<b>2</b>
West	PHC / CHC	1	2	1	2	<b>2</b>
Tripura	<b>DH</b>	5	5	4	5	<b>5</b>
	<b>SDH</b>	9	9	9	9	<b>9</b>
	<b>PHC / CHC</b>	14	15	14	14	<b>15</b>
<b>Total</b>		28	29	27	28	<b>29</b>

**Table 12: District & facility wise location of NBCC**

Location of NBCC						
District	Type of facilities	Inside the Labour Room	Outside the Labour Room but in close proximity	Outside the Labour Room & outside premises	No	Total Labour Room Surveyed
Dhalai	DH	1				1
	SDH	1	1			2
	PHC / CHC				2	2
Gomati	DH		1			1
	SDH	1				1
	PHC / CHC	2	1			3
Khowai	DH	1				1
	PHC / CHC	1				1
North	DH	1				1
	SDH	1				1
Sipajhala	SDH	2				2
	PHC / CHC	2				2
South	DH	1				1
	SDH	2				2
	PHC / CHC	3				3
Unokoti	SDH			1		1
	PHC / CHC	2				2
West	PHC / CHC	2				2
Tripura	DH	4	1			5
	SDH	7	1	1		9
	PHC / CHC	12	1		2	15
<b>Total</b>		<b>23</b>	<b>3</b>	<b>1</b>	<b>2</b>	<b>29</b>

**Table 13.a: District & facility wise no. of average deliveries at the health facility per month during last 6 month**

<b>No. of average deliveries at the health facility per month during last 6 month</b>							
<b>District</b>	<b>Type of facilities</b>	<b>Up to 10</b>	<b>11 to 30</b>	<b>31 to 50</b>	<b>51 to 100</b>	<b>101 &amp; above</b>	<b>Total Labour Room Surveyed</b>
Dhalai	DH				1		1
	SDH				2		2
	PHC / CHC			1	1		2
Gomati	DH					1	1
	SDH			1			1
	PHC / CHC		3				3
Khowai	DH					1	1
	PHC / CHC				1		1
North	DH				1		1
	SDH				1		1
Sipaijhala	SDH			1	1		2
	PHC / CHC		1	1			2
South	DH				1		1
	SDH			1	1		2
	PHC / CHC		2	1			3
Unokoti	SDH					1	1
	PHC / CHC			2			2
West	PHC / CHC			2			2
Tripura	<b>DH</b>				<b>3</b>	<b>2</b>	<b>5</b>
	<b>SDH</b>			<b>3</b>	<b>5</b>	<b>1</b>	<b>9</b>
	<b>PHC / CHC</b>		<b>6</b>	<b>7</b>	<b>2</b>		<b>15</b>
<b>Total</b>			<b>6</b>	<b>10</b>	<b>10</b>	<b>3</b>	<b>29</b>

**Table 13.b: District & facility wise no. of still birth at the health facility during last 3 months**

<b>No. of still birth at the health facility during last 3 months</b>					
<b>District</b>	<b>Type of facilities</b>	<b>Nil / No Data</b>	<b>Up to 4</b>	<b>4 to 9</b>	<b>Total Labour Room Surveyed</b>
Dhalai	DH		1		1
	SDH			2	2
	PHC / CHC		2		2
Gomati	DH	1			1
	SDH	1			1
	PHC / CHC	2	1		3
Khowai	DH		1		1
	PHC / CHC		1		1
North	DH		1		1
	SDH			1	1
Sipajhala	SDH		2		2
	PHC / CHC	1	1		2
South	DH		1		1
	SDH	1		1	2
	PHC / CHC	2		1	3
Unokoti	SDH			1	1
	PHC / CHC		2		2
West	PHC / CHC	2			2
Tripura	<b>DH</b>	<b>1</b>	<b>4</b>		<b>5</b>
	<b>SDH</b>	<b>2</b>	<b>2</b>	<b>5</b>	<b>9</b>
	<b>PHC / CHC</b>	<b>7</b>	<b>7</b>	<b>1</b>	<b>15</b>
<b>Total</b>		<b>10</b>	<b>13</b>	<b>6</b>	<b>29</b>

**Table 13.c: District & facility wise no. of baby resuscitated under radiant warmer during last 3 months**

<b>No. of baby resuscitated under radiant warmer during last 3 months</b>						
<b>District</b>	<b>Type of facilities</b>	<b>Nil / No Data</b>	<b>Up to 100</b>	<b>101 to 200</b>	<b>301 &amp; above</b>	<b>Total Labour Room Surveyed</b>
Dhalai	DH	1				1
	SDH	2				2
	PHC / CHC	2				2
Gomati	DH	1				1
	SDH		1			1
	PHC / CHC	1	2			3
Khowai	DH	1				1
	PHC / CHC	1				1
North	DH		1			1
	SDH	1				1
Sipaijhala	SDH	1		1		2
	PHC / CHC	2				2
South	DH	1				1
	SDH	1			1	2
	PHC / CHC	2			1	3
Unokoti	SDH		1			1
	PHC / CHC	1	1			2
West	PHC / CHC	2				2
Tripura	<b>DH</b>	<b>4</b>	<b>1</b>			<b>5</b>
	<b>SDH</b>	<b>5</b>	<b>2</b>	<b>1</b>	<b>1</b>	<b>9</b>
	<b>PHC / CHC</b>	<b>11</b>	<b>3</b>		<b>1</b>	<b>15</b>
<b>Total</b>		<b>20</b>	<b>6</b>	<b>1</b>	<b>2</b>	<b>29</b>

**Table 13.d: District & facility wise no. of baby started breastfeeding within one hour after delivery**

<b>No. of baby started breastfeeding within one hour after delivery</b>							
<b>District</b>	<b>Type of facilities</b>	<b>Nil / No Data</b>	<b>Up to 100</b>	<b>101 to 200</b>	<b>201 to 300</b>	<b>301 &amp; above</b>	<b>Total Labour Room Surveyed</b>
Dhalai	DH				1		1
	SDH			1	1		2
	PHC / CHC			2			2
Gomati	DH	1					1
	SDH		1				1
	PHC / CHC	1	2				3
Khowai	DH					1	1
	PHC / CHC	1					1
North	DH			1			1
	SDH			1			1
Sipaijhala	SDH	2					2
	PHC / CHC	2					2
South	DH					1	1
	SDH	1				1	2
	PHC / CHC	1			1	1	3
Unokoti	SDH					1	1
	PHC / CHC		2				2
West	PHC / CHC	1		1			2
Tripura	<b>DH</b>	<b>1</b>		<b>1</b>	<b>1</b>	<b>2</b>	<b>5</b>
	<b>SDH</b>	<b>3</b>	<b>1</b>	<b>2</b>	<b>1</b>	<b>2</b>	<b>9</b>
	<b>PHC / CHC</b>	<b>6</b>	<b>4</b>	<b>3</b>	<b>1</b>	<b>1</b>	<b>15</b>
<b>Total</b>		<b>10</b>	<b>5</b>	<b>6</b>	<b>3</b>	<b>5</b>	<b>29</b>



**Table 13.e: District & facility wise number of babies referred to NBSU or SCNU in last 3 months**

<b>No. of baby referred to NBSU, SCNU or Higher centres during last 3 months</b>					
<b>District</b>	<b>Type of facilities</b>	<b>Nil / No Data</b>	<b>Up to 4</b>	<b>9 &amp; above</b>	<b>Total Labour Room Surveyed</b>
Dhalai	DH		1		1
	SDH	2			2
	PHC / CHC	1	1		2
Gomati	DH	1			1
	SDH		1		1
	PHC / CHC	1	2		3
Khowai	DH	1			1
	PHC / CHC	1			1
North	DH			1	1
	SDH	1			1
Sipaijhala	SDH	2			2
	PHC / CHC	1	1		2
South	DH	1			1
	SDH	1		1	2
	PHC / CHC	3			3
Unokoti	SDH	1			1
	PHC / CHC		1	1	2
West	PHC / CHC	1	1		2
Tripura	<b>DH</b>	<b>3</b>	<b>1</b>	<b>1</b>	<b>5</b>
	<b>SDH</b>	<b>7</b>	<b>1</b>	<b>1</b>	<b>9</b>
	<b>PHC / CHC</b>	<b>8</b>	<b>6</b>	<b>1</b>	<b>15</b>
<b>Total</b>		<b>18</b>	<b>8</b>	<b>3</b>	<b>29</b>

**Table 13.f: District & facility wise active Management of Third Stage of Labour (AMTSL) { MoV- Direct observation or by the availability and usage of inj. Oxytocin (10 i.u per patient ) }**

<b>Active Management of Third Stage of Labour (AMTSL) { MoV- Direct observation or by the availability and usage of inj. Oxytocin (10 i.u per patient ) }</b>					
<b>District</b>	<b>Type of facilities</b>	<b>Nil / No Data</b>	<b>Up to 100</b>	<b>201 to 300</b>	<b>Total Labour Room Surveyed</b>
Dhalai	DH			1	1
	SDH	2			2
	PHC / CHC	2			2
Gomati	DH	1			1
	SDH	1			1
	PHC / CHC	2	1		3
Khowai	DH	1			1
	PHC / CHC	1			1
North	DH		1		1
	SDH		1		1
Sipaijhala	SDH	2			2
	PHC / CHC	2			2
South	DH	1			1
	SDH	2			2
	PHC / CHC	3			3
Unokoti	SDH	1			1
	PHC / CHC	1	1		2
West	PHC / CHC	2			2
Tripura	<b>DH</b>	<b>3</b>	<b>1</b>	<b>1</b>	<b>5</b>
	<b>SDH</b>	<b>8</b>	<b>1</b>		<b>9</b>
	<b>PHC / CHC</b>	<b>13</b>	<b>2</b>		<b>15</b>
<b>Total</b>		<b>24</b>	<b>4</b>	<b>1</b>	<b>29</b>

**Table 14.a District & facility wise administration of birth doses- BCG**

<b>Administration of birth doses- BCG</b>							
<b>District</b>	<b>Type of facilities</b>	<b>Nil / No Data</b>	<b>Up to 100</b>	<b>101 to 200</b>	<b>201 to 300</b>	<b>301 &amp; above</b>	<b>Total Labour Room Surveyed</b>
Dhalai	DH	1					1
	SDH	1	1				2
	PHC / CHC	2					2
Gomati	DH	1					1
	SDH		1				1
	PHC / CHC	2	1				3
Khowai	DH				1		1
	PHC / CHC	1					1
North	DH		1				1
	SDH		1				1
Sipajhala	SDH	1		1			2
	PHC / CHC	1	1				2
South	DH	1					1
	SDH	1				1	2
	PHC / CHC	1			1	1	3
Unokoti	SDH		1				1
	PHC / CHC	1	1				2
West	PHC / CHC	1		1			2
Tripura	<b>DH</b>	<b>3</b>	<b>1</b>		<b>1</b>		<b>5</b>
	<b>SDH</b>	<b>3</b>	<b>4</b>	<b>1</b>		<b>1</b>	<b>9</b>
	<b>PHC / CHC</b>	<b>9</b>	<b>3</b>	<b>1</b>	<b>1</b>	<b>1</b>	<b>15</b>
<b>Total</b>		<b>15</b>	<b>8</b>	<b>2</b>	<b>2</b>	<b>2</b>	<b>29</b>

**Table 14.b District & facility wise administration of birth doses- OPV**

<b>Administration of birth doses-OPV</b>							
<b>District</b>	<b>Type of facilities</b>	<b>Nil / No Data</b>	<b>Up to 100</b>	<b>101 to 200</b>	<b>201 to 300</b>	<b>301 &amp; above</b>	<b>Total Labour Room Surveyed</b>
Dhalai	DH	1					1
	SDH	1	1				2
	PHC / CHC	2					2
Gomati	DH	1					1
	SDH		1				1
	PHC / CHC		3				3
Khowai	DH				1		1
	PHC / CHC	1					1
North	DH		1				1
	SDH			1			1
Sipaijhala	SDH	1		1			2
	PHC / CHC	1	1				2
South	DH	1					1
	SDH	1				1	2
	PHC / CHC	1			1	1	3
Unokoti	SDH		1				1
	PHC / CHC		2				2
West	PHC / CHC	1		1			2
Tripura	<b>DH</b>	<b>3</b>	<b>1</b>		<b>1</b>		<b>5</b>
	<b>SDH</b>	<b>3</b>	<b>3</b>	<b>2</b>		<b>1</b>	<b>9</b>
	<b>PHC / CHC</b>	<b>6</b>	<b>6</b>	<b>1</b>	<b>1</b>	<b>1</b>	<b>15</b>
<b>Total</b>		<b>12</b>	<b>10</b>	<b>3</b>	<b>2</b>	<b>2</b>	<b>29</b>

**Table 14.b District & facility wise administration of birth doses- OPV**

Hepatitis- B							
District	Type of facilities	Nil / No Data	Up to 100	101 to 200	201 to 300	301 & above	Total Labour Room Surveyed
Dhalai	DH	1					1
	SDH	1	1				2
	PHC / CHC	2					2
Gomati	DH	1					1
	SDH		1				1
	PHC / CHC		3				3
Khowai	DH			1			1
	PHC / CHC	1					1
North	DH		1				1
	SDH	1					1
Sipaijhala	SDH	1		1			2
	PHC / CHC	1	1				2
South	DH	1					1
	SDH	1				1	2
	PHC / CHC	1			1	1	3
Unokoti	SDH		1				1
	PHC / CHC		2				2
West	PHC / CHC	1		1			2
Tripura	DH	3	1	1			5
	SDH	4	3	1		1	9
	PHC / CHC	6	6	1	1	1	15
<b>Total</b>		<b>13</b>	<b>10</b>	<b>3</b>	<b>1</b>	<b>2</b>	<b>29</b>

## Annex 1: List of surveyed facilities:

Sl.	Name of District:	Name of Block :	Name of Facility:	Type of facility :
1	Dhalai	Salema	BSM	SDH
2	Dhalai	Manu	Manu CHC	CHC
3	Dhalai	Ambasa	Dhalai DH	DH
4	Dhalai	Chamunu	Chamunu PHC	PHC
5	Dhalai	Dumbunagar	Gandachera SDH	SDH
6	South Tripura	Jolaibari CHC	Jolaibari	CHC
7	South Tripura	Subroom Nagar	Subroom SDH	SDH
8	South Tripura	Satchand	Manubazar CHC	CHC
9	South Tripura	Shantibazar	South DH	DH
10	South Tripura	Rajnagar	Rajnagar PHC	PHC
11	South Tripura	Belonia	Belonia SDH	SDH
12	North Tripura	Dosda	Kanchanpur SDH	SDH
13	North Tripura	Dharmanagar	Dharmanagar Dh	DH
14	Gomati		Gomati DH	DH
15	Gomati	Killa	Killa PHC	PHC
16	Khowai		Khowai DH	DH
17	Khowai		Teliamura CHC	CHC
18	Unokoti	Kailash	RGM SDH	SDH
19	Unokoti	Pecharthal	Pecharthal PHC	PHC
20	Unokoti	Kumarghat	Kumarghat CHC	CHC
21	Gomati	Ompi	Ompi CHC	CHC
22	Gomati	Amarpur	Natun Bazar	CHC
23	Gomati	Amarpur	Amarpur SDH	SDH
24	Sipaijhala		Takarjhala CHC	CHC
25	Sipaijhala	Bishalgarh	Bishalgarh SDCH	SDCH
26	Sipaijhala	Bishramganj	Bishramganj PHC	PHC
27	Sipaijhala	Melaghar	Sonamura SDH	SDH/FRU
28	West	Jirania	Jirania CHC	CHC/Non FRU
29	West	Mohanpur	Mohanpur CHC	CHC